

## DOUGLAS G. PETERSON & ASSOCIATES, INC.

CONSULTING ENGINEERS

Douglas G. Peterson & Associates introduces the structural group within our Engineering Design Division. Our existing firm profile has 40 years of experience with a wide range of structural engineering challenges.

Providing services to architects, building and property owners, developers, contractors, building managers, and engineers in other trades, we specialize in several key areas of structural engineering:

- Design of new structures
- Restoration and renovation of existing structures
- Engineering calculations for contractors
- Construction contract disputes—forensic engineering

Constant changes in building and material codes make it even more essential to select a structural engineer with up-to-date knowledge of construction and methods of design.

No matter the scale or scope of the project, we pride ourselves on producing a design that is understandable, submittable and buildable.

### Douglas G. Peterson & Associates, Inc. is your resource for:

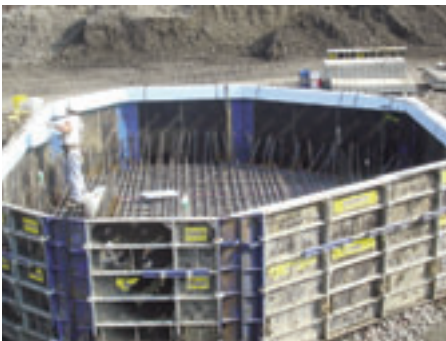
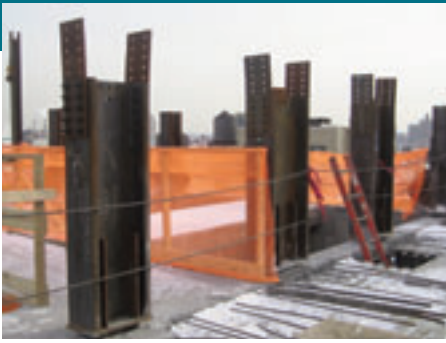
- Pre-purchase/due diligence studies
- Feasibility and cost studies
- New and existing building structural design
- Peer reviews of existing designs
- Value engineering
- Engineering solutions to sustainable goals

### We are always growing—expanding to meet client needs in a timely manner:

- We thrive in unique situations.
- We meet the challenges that result from advancing technology.
- We pride ourselves on fulfilling and exceeding the demands of our clients.

*We look forward to talking with you about your engineering design needs.*

**New York City Office:**  
22 Cortlandt Street, 16th Floor  
New York, NY 10007  
212-419-0370  
dgpa-nyc@dgpa.com  
www.dgpa.com



## STRUCTURAL ENGINEERING

HABITATIONAL

Design

COMMERCIAL

Construction

MANUFACTURING

Restoration

SUSTAINABILITY

